

PROJECT: \_\_\_\_\_  
 CATALOG #: \_\_\_\_\_  
 FIXTURE TYPE: \_\_\_\_\_  
 NOTES: \_\_\_\_\_

# TP G2 LED Backlit Panel

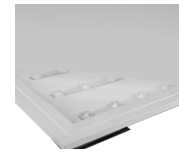


## PERFORMANCE INFORMATION

SIZE	SERIES NUMBER	WATT	LUMENS	CCT
1' x 4'	TP 14 45 G2 40K	40W	4,500	4000K
2' x 4'	TP 24 55 G2 40K	50W	5,500	4000K
2' x 4'	TP 24 70 G2 40K	60W	6,600	4000K

The next generation **TP G2 Backlit Panel Series** is well designed with innovative backlit technology for even, edge-to-edge illumination that covers the entire surface of the panel. This economical flat panel is available in two sizes and features higher lumens and improved performance with no effects of yellowing with time. Easy to install and built to last, this luminaire is perfectly suited for a wide variety of applications including schools, offices, and medical facilities.

### Backlit LEDs



Utilizing innovative backlit technology for even, edge-to-edge illumination.

### APPLICATIONS

Commercial, Educational, Healthcare Facilities, Medical, Offices, and Retail, etc.

## ORDERING GUIDE

EXAMPLE: TP 22 45 G2 40K

Luminaire Type	Size	Lumen Output	Generation	Voltage	CCT	Finish	Options
TP Backlit Panel Series	14 1' x 4'	45 4,400 Lumens	G2	BLANK= 120-277V	35K 3500K	BLANK=White	<b>BLANK</b> No option <b>EL UNV-8W-PANEL</b> Emergency Driver 8W <b>2x4SMK-4IN</b> Surface Mounting Kit for Panel and Troffer, 48" x 24" x 4" <b>1x4SMK-4IN</b> Surface Mounting Kit for TPS 14 - 4" height <b>2X4FLANGE</b> Flange kit for TPS 24 <b>1X4FLANGE</b> Flange kit for TPS 14 <b>TP-SCABLE</b> Suspended Cable for Panel, 1 set per luminaire, 7 ft. max.
	24 2' x 4'	55 5,500 Lumens			40K 4000K		
	70 6,600 Lumens	50K 5000K					

Due to continuous product improvements, specification and/or equipment updates may change without notice.

## SPECIFICATIONS

### HOUSING

Light weight aluminum frame housing.

### AMBIENT TEMPERATURE

Suitable for use in -20°C to 45°C (-4°F to 113°F)

### MOUNTING

Surface, Recessed, and Suspension Cable mounting with customized accessories available.

### EFFICACY

110 lumens per watt (see individual wattage data)

### CCT AND CRI

3500K, 4000K and 5000K CCT available; 80CRI

### OPTICS

White frosted diffuser

### WARRANTY

5-year limited warranty. Comprehensive warranty terms can be located on [www.slgus.com](http://www.slgus.com).

### ELECTRICAL

50/60Hz Operation with 120-277V input. Standard 0-10V dimming.

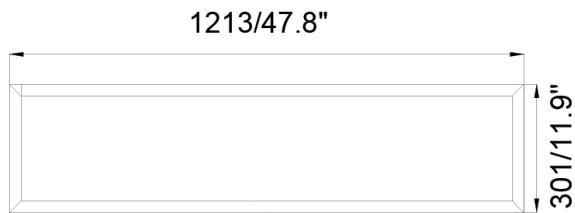
### FINISH

Standard Polyester Powder White finish.

### CERTIFICATIONS

UL Listed for damp locations. FCC compliant. RoHs compliant. Design Lights Consortium® (DLC) Standard 5.1 qualified product. Not all versions of this product may be DLC qualified. Please visit [www.slgus.com](http://www.slgus.com) to confirm which versions are qualified.

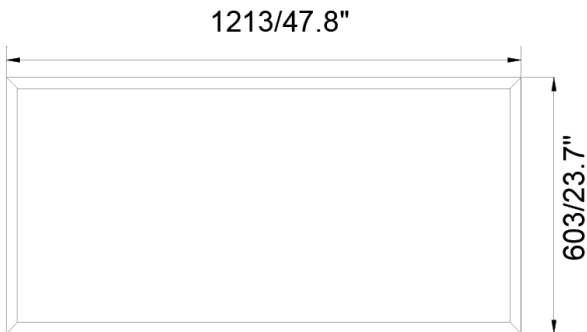
## DIMENSIONS



TP 14

Depth: 44/1.7"

Weight: 5.8 lbs.



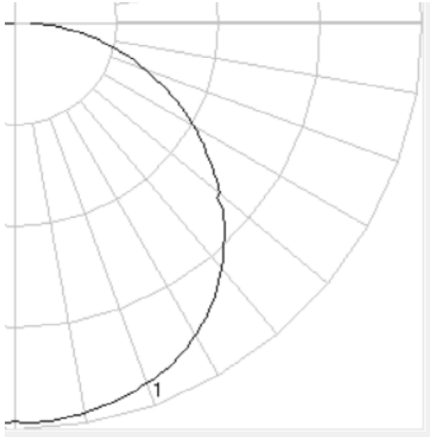
TP 24

Depth: 44/1.7"

Weight: 9.4 lbs.

Due to continuous product improvements, specification and/or equipment updates may change without notice.

## PHOTOMETRIC DATA



**TP 24 45 G2 35K**

Lumens: 4,400 Lumens  
 Power: 40W  
 Efficacy: 110 lm/W  
 Beam Angle: 120°  
 Spacing Criterion: 1.30

## ELECTRICAL DATA

Watt	Current (A)			
	120V	208V	240V	277V
40W	0.33	0.19	0.17	0.14
50W	0.42	0.26	0.21	0.18
60W	0.50	0.29	0.25	0.22

Due to continuous product improvements, specification and/or equipment updates may change without notice.