

HEC G2

LED Selectable High Bay Gen 2 **CONTRACTOR XP**

Due to continuous product improvements, specification and/or equipment updates may change without notice.



(Images are shown for illustration purposes only)

HEC G2 LED High Bay

Prismatic Lens for Low Glare

The contractor experience **HEC LED Linear Highbay Gen 2** offers a great budget solution for your linear highbay needs. A powerful stocking solution featuring 4 selectable lumen outputs and 2 selectable CCT outputs for versatility without sacrificing shelf space. Lightweight, functional housing paired with easy controls options makes the **HEC G2** a great high bay.

Catalog Number	Description	Lumens	Watts	CCT	Voltage
HEC LS300 G2 FSK	LED Linear High Bay - Standard Voltage	Selectable 14,800 - 30,500 Lm	Selectable 100- 210 W	Selectable 4000K - 5000K	120V - 277V
HEC LS300 G2 HVU FSK	LED Linear High Bay - High Voltage	Selectable 15,000 - 31,000 Lm	Selectable 110- 225 W	Selectable 4000K - 5000K	347V / 480V

ORDERING GUIDE

Example: HEC LS300 G2 FSK

Fixture Type	Selectable Lumen Output	Generation	Voltage	Selectable CCT	Finish	Options - Emergency Backup	Options - Controls	Options - Accessories
<ul style="list-style-type: none"> HEC Selectable Linear High Bay 	<ul style="list-style-type: none"> LS300* <ul style="list-style-type: none"> 14,800 Lm / 100W 20,000 Lm / 130W 26,200 Lm / 180W 30,500 Lm / 210W 	<ul style="list-style-type: none"> G2 Second Generation 	<ul style="list-style-type: none"> BLANK HVU* 	<ul style="list-style-type: none"> FSK 4000K 5000K 	<ul style="list-style-type: none"> BLANK White 	<ul style="list-style-type: none"> BLANK No backup. ES-EIA32-01S Emergency backup (120-277V). EMA-LH40D-HVU-400 Emergency backup (40W) for HVU model. 	<ul style="list-style-type: none"> BLANK None Bluetooth Controls MSB-DCE-06 OSLG sync Bluetooth motion sensor <ul style="list-style-type: none"> L3 Medium Bay lens L7 High Bay lens FCB-DCE-02 OSLG sync Bluetooth Plug-in Controller Node Basic Controls MS-DCE-07 Motion sensor MS-20-L7 High bay lens RM-51 Remote control for motion sensor. 	<ul style="list-style-type: none"> BLANK None WG-HEC G2 Wire guard HEC-PM Pendant mount SPD-277 Surge protector (120-277V) SPD-480 Surge protector (for HVU model) CS1 6' Straight Blade Plug (120-277V) CS2 6' Twist-Lock Plug (120-277V) CS3 6' 600V 14/2 MC Solid Cable - no plug CS4 6' 600V SD Black Cord, no plug, 18/3 CS5 6' 18 Gauge, 5 Conductors, no plug

***HVU model data:**
15,000 Lm / 110W
20,500 Lm / 145W
26,000 Lm / 190W
31,000 Lm / 225W

Performance Information

Series Number	Power Percentage	Lumens	Wattage	Efficacy	CCT
HEC LS300 (Universal 120-277VAC)	100%	30,500 Lm	210 W	145 Lm/W	4000K/5000K
	80%	26,200 Lm	180 W	146 Lm/W	
	60%	20,000 Lm	130 W	154 Lm/W	
	40%	14,800 Lm	100 W	148 Lm/W	
HEC LS300 HVU (347/480VAC)	100%	31,000 Lm	225 W	138 Lm/W	
	80%	26,000 Lm	190 W	137 Lm/W	
	60%	20,500 Lm	145 W	141 Lm/W	
	40%	15,000 Lm	110 W	136 Lm/W	

Specifications

Housing

Ultra-compact cold-rolled corrosion-resistant steel.

Ambient Temperature

Suitable for use in -40° C to 50° C (-40° F to 122° F).

Mounting

Standard Aircraft Cable Mounting (default), surface mount, and pendent installation with conduit.

Efficacy

Up to 154 lumens per watt.

CCT and CRI

Field selectable: 4000K and 5000K.
CRI 70.

Lumen Output

Universal 120-277V Field selectable: 14,800 - 30,500 Lm.
HVU 347/480V Field selectable: 15,000 - 31,000 Lm.

Warranty

5-year limited warranty. Comprehensive warranty terms can be located on www.slgus.com.

Electrical

Standard 120V - 277V

0-10V dimming standard with a dimming range of 100% to 10%.

High Voltage HVU 347V/480V.

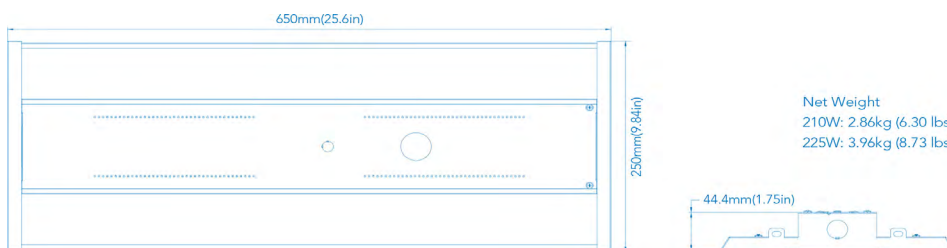
Certifications

UL Listed for damp locations. FCC compliant. Design Lights Consortium® (DLC) Premium 5.1 qualified product.

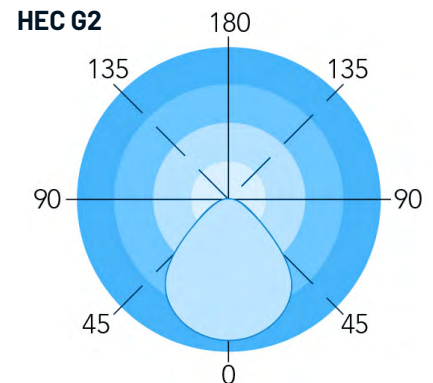
With **MSB-DCE-06** motion sensor: DLC Network Lighting Controls qualified system (SLG Sync) N-EPBK41

Dimensions

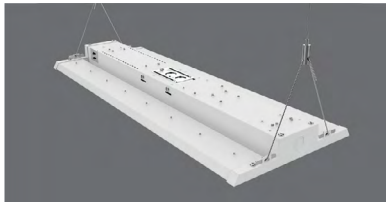
HEC G2



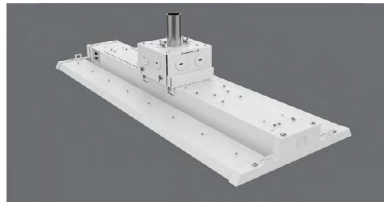
Photometric



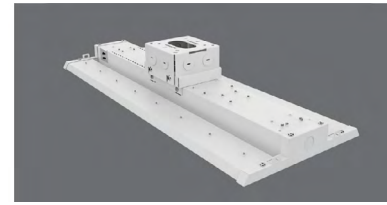
Mounting



Standard Aircraft Cable Mounting
(Accessories included)



Conduit Pendant Mount



Surface Mount

Accessories



MSB-DCE-06
Plug-in Controller/Sensor



FCB-DCE-02
Plug-in Node



HEC-PM
Pendant hanger



WG-HEC12
Wire guards

Electrical Load

		Current (A)						Current (A)			
		Power Setting	Wattage	120V	208V	240V	277V	Power Setting	Wattage	347V	480V
HEC LS300 G2 FSK	Low	100 W	0.83	0.48	0.42	0.36	HEC LS300 G2 FSK	Low	110 W	0.32	0.23
	Med	130 W	1.08	0.63	0.54	0.47		Med	145 W	0.42	0.3
	High	180 W	1.5	0.87	0.75	0.65		High	190 W	0.55	0.4
	Max	210 W	1.75	1.01	0.88	0.76		Max	225 W	0.65	0.47

Shipping Information



Product Number	Individual Box Size	Individual Box Weight	# Per Carton	# Per Pallet
HEC LS300 G2 FSK	26.8" x 11" x 4.3"	14.19 LBS	2	
HEC LS300 G2 HVU FSK	26.8" x 11" x 4.3"	-	2	

Bluetooth Motion sensor



MSB-DCE-06
(Pictured with L7 lens)

Specifications:

Input Voltage
DC 12V

IP Rating
IP66

Input Current
50mA Max

Input Power
0.6 W

Output Voltage
DC 10V

Output Current
10mA Max

Output Power
0.1W

Sinking Current
10mA Max

Bluetooth Transmit
200 ft. Max

Radio Frequency
2.4 GHz +- 75 MHz

Mounting Height
20 - 40 ft

Dimming
Class 2, 0-10V DC 10mA Max

Detection Range
40 - 80 ft

Operating Temperature
-30°C to 55°C (-22°F to 131°F)

Warranty
5 Year warranty

Commissioning

This Bluetooth sensor/controller is easily commissioned via the SLG Sync app, available for download on Google Play and the App Store.

App Download:



For commissioning guide and more information visit:

www.slgsync.com

Basic Motion sensor



MS-DCE-07
(Pictured with L7 lens)

Specifications:

Input Voltage
DC 12V

Input Current
8mA

Input Power
0.1 W

Output Current
10mA Max

Output Power
0.1W

Sinking Current
10mA Max

IP Rating
IP66

Detection Range
40-80 ft

Mounting Height
20-40 ft

Dimming
Class 2, 0-10V DC 10mA Max

Operating Temperature
-30°C to 70°C (-22°F to 158°F)

Warranty
5 Year warranty

Commissioning

This basic sensor is commissioned via the RM51 remote. Either pre-commissioned or commissioned on site.

