

# ALC G1

## LED Area Light Contractor Series **CONTRACTOR XP**

Due to continuous product improvements, specification and/or equipment updates may change without notice.



(Images are shown for illustration purposes only)

**ALCL**  
Large

**ALCM**  
Medium

**ALCS**  
Small

The *ALC Area Light Contractor Series Gen 1* comes in three sizes small, medium, and large with a lumen output between 9,000 to 39,300 lumens. This versatile luminaire designed for contractors has different mounting options, photocell, and motion sensors for efficiency and greater energy savings.

### REPLACEMENT

- ALCS: 175W- 250W MH,
- ALCM: 400W MH
- ALCL: 750W-1000W MH

## ORDERING GUIDE

Example: **ALC M 210 T4 G1 4K**

Fixture Type	Size	Lumen Output	Dist.	Gen	Voltage	CCT	Finish	Mount	Options	Glare Shield
• ALC LED Area Light	• <b>S</b> Small	• <b>60</b> 5,500 Lumens	• <b>T3</b> Type III • <b>T4</b> Type IV • <b>T5</b> Type V	• <b>G1</b> First Generation	• <b>BLANK</b> 120-277 V • <b>HVU</b> 347-480 V	• <b>4K</b> 4000K • <b>5K</b> 5000K	• <b>BLANK</b> Dark Bronze • <b>C*</b> Custom	• <b>ALC-SPAR</b> Square and Round Pole Mount • <b>ALC-WMB</b> Wall Mount • <b>ALC-SFD</b> Slipfitter Mount • <b>ALC-T</b> Trunnion Mount	• <b>PC-1</b> Twist-lock Photocell (120-277V) • <b>PC-2</b> Twist-lock Photocell (480V) • <b>PC-3</b> 7-Pin receptacle • <b>MS-ACI-01</b> Motion Sensor 120-277V • <b>MSB-13-L3</b> (8'-20' Mounting Height - 50' diameter - 1.3" fitting) • <b>MSB-13-L7</b> (20'-40' Mounting Height - 80' diameter - 1.3" fitting) • <b>RM51</b> Remote for MS-ACI-01	• <b>ALCS-EGS</b> External Glare Shield for ALC Small (Dark Bronze finish) • <b>ALCM-EGS</b> External Glare Shield for ALC Medium (Dark Bronze finish) • <b>ALCL-EGS</b> External Glare Shield for ALC Large (Dark Bronze finish)
		• <b>96</b> 9,500 Lumens								
	• <b>140</b> 13,400 Lumens									
	• <b>M</b> Medium	• <b>210</b> 20,100 Lumens • <b>260</b> 25,000 Lumens								
	• <b>L</b> Large	• <b>350</b> 34,000 Lumens • <b>410</b> 40,200 Lumens								

## Specifications

### Housing

Precision die-cast aluminum housings with intergral heat-sink fins. Parting lines dressed for high quality finish.

### Ambient Temperature

Suitable for use in  $-40^{\circ}\text{C}$  to  $45^{\circ}\text{C}$  ( $-40^{\circ}\text{F}$  to  $113^{\circ}\text{F}$ )

### Mounting

Mounting options include Square and Round Pole Mount, Wall Mount, Adjustable Slipfitter Mount and Trunnion Mount. Photocell is mounted to the Square and Round Pole Mount, Wall Mount, and Slipfitter Mount by default.

### Efficacy

Up to 139 lumens per watt (see individual wattage data)

### CCT and CRI

4000K and 5000K CCT available; 70CRI

### Energy Data

Constant current driver efficiency above 90%.

### Warranty

5-year limited warranty. Comprehensive warranty terms can be located on [www.slgus.com](http://www.slgus.com).

### Electrical

Standard 120-277V. HVU 347V/480V. 50/60Hz with open/short circuit protection. Standard 1.5ft power cord, 18 gauge with 3 conductors. 10K Surge protector per ANSI/IEEE C62.41.2. NEMA twist-lock photocell control. Dimming 0-10V driver.

### Certifications

UL Listed for wet locations. Equivalent to IP65 rating. FCC compliant. RoHs compliant. DesignLights Consortium® (DLC) Premium 5.1 DLC qualified product. Not all versions of this product may be DLC qualified. Please visit [www.slgus.com](http://www.slgus.com) to confirm which versions are qualified.

## Mounting & Options



ALC-SPAR  
(Optional Photocell)



ALC-WMB  
(Optional Photocell)



ALC-SFD  
(Optional Photocell)



ALC-EGS



ALC-T



PC-1



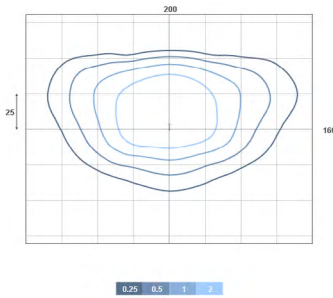
PC-2

## Photometric

### Type III

Type III optics produce an asymmetrical pattern that directs the majority of the light forward and equally on both sides of the luminaire. In a back-to-back configuration, it creates a rectangular pattern which can extend pole spacings.

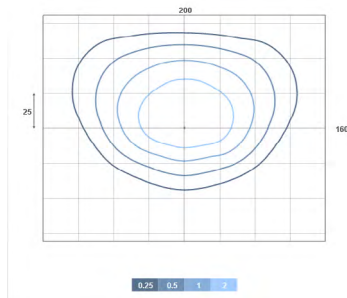
ALCM 210 T3 G15K



### Type IV

Type IV is suitable for applications where light is primarily required forward with minimal back light. Typical installations include perimeter poles.

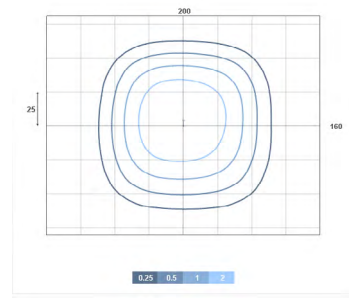
ALCM 210 T4 G15K



### Type V

Type V optics produce a symmetrical square distribution pattern that distributes light equally on all sides of the luminaire. Type V luminaires is universal for most area lighting applications.

ALCM 210 T5 G15K



Mounting Height	15	20	25	30	35
Multiplier	2.8	1.6	1.0	0.7	0.5

### EPA OF AREA LIGHT

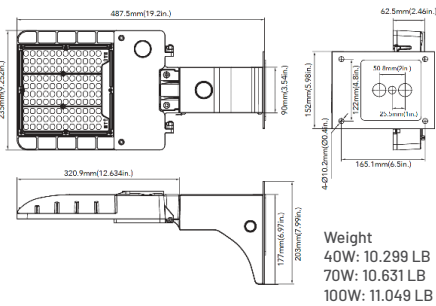
<b>S</b>	<b>ALCS 60</b>	40W							
	<b>ALCS 96</b>	70W	0.3413	0.5929	0.7983	0.6826	1.0239	1.0499	1.0239
	<b>ALCS 140</b>	100W							
<b>M</b>	<b>ALCM 210</b>	150W							
	<b>ALCM 260</b>	200W	0.423	0.735	0.873	0.846	1.158	1.185	1.158
<b>L</b>	<b>ALCL 350</b>	250W							
	<b>ALCL 410</b>	300W	0.4759	0.7889	1.0581	0.9518	1.2648	1.3711	1.2648

## Performance Comparison

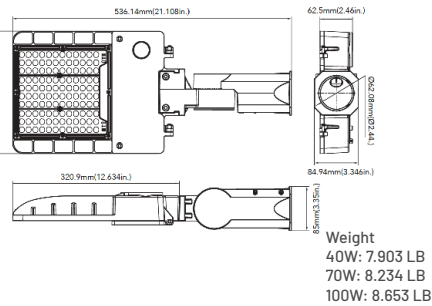
Product Series	Watt	Lumen	Efficacy	Replaces	Voltage	Max Mounting Height	DLC
<b>ALCS 60 T3 G15K</b>	40W	5,500 Lm	137 Lm/W	100W	120-277V	10-15 ft	Premium
<b>ALCS 96 T3 G15K</b>	70W	9,500 Lm	136 Lm/W	175W	120-277V	15-20 ft	Premium
<b>ALCS 140 T3 G15K</b>	100W	13,400 Lm	134 Lm/W	250W	120-277V	15-20 ft	Premium
<b>ALCM 210 T3 G15K</b>	150W	20,100 Lm	134 Lm/W	400W	120-277V	20-30 ft	Premium
<b>ALCM 260 T3 G15K</b>	200W	25,000 Lm	125 Lm/W	400W	120-277V	20-30 ft	Premium
<b>ALCL 350 T3 G15K</b>	250W	34,000 Lm	136 Lm/W	750W	120-277V	30-50 ft	Premium
<b>ALCL 410 T3 G15K</b>	300W	40,200 Lm	134 Lm/W	1000W	120-277V	30-50 ft	Premium

## Dimensions

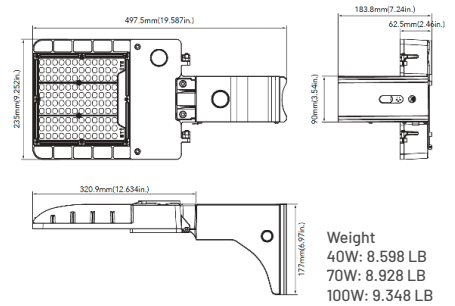
**SMALL**  
40W, 70W, 100W  
Wall Mount



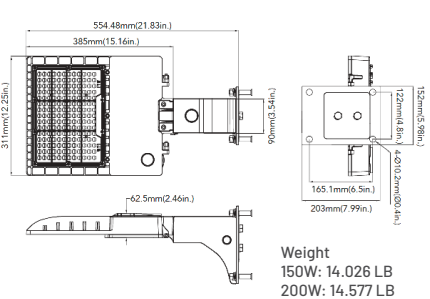
**SMALL**  
40W, 70W, 100W  
Slipfitter Mount



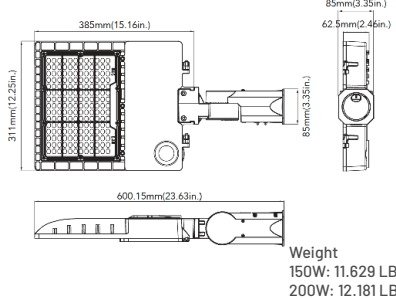
**SMALL**  
40W, 70W, 100W  
Pole Mount



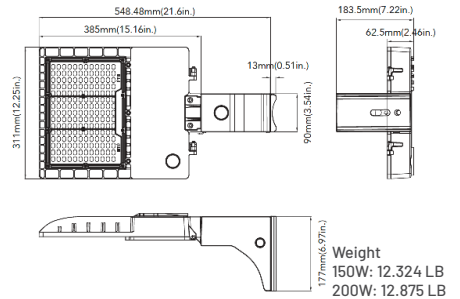
**MEDIUM**  
150W & 200W  
Wall Mount



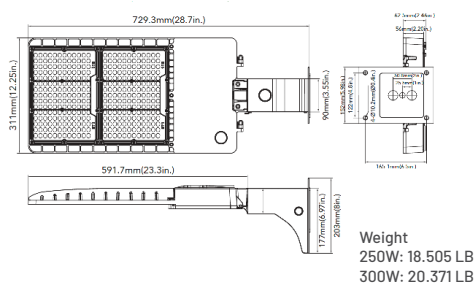
**MEDIUM**  
150W & 200W  
Slipfitter Mount



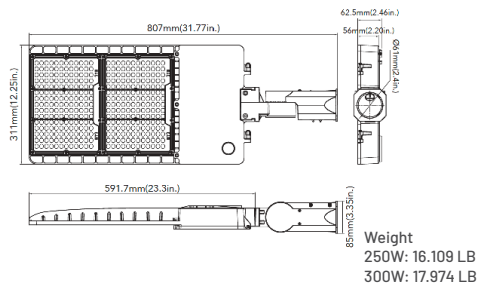
**MEDIUM**  
150W & 200W  
Pole Mount



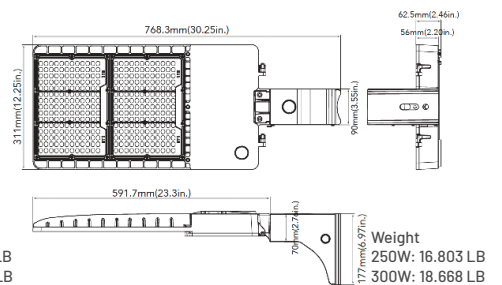
**LARGE**  
250W & 300W  
Wall Mount



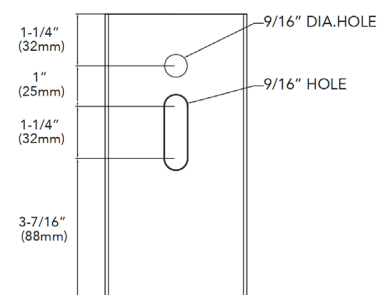
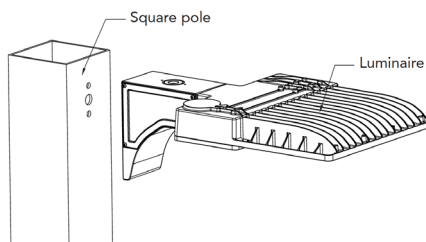
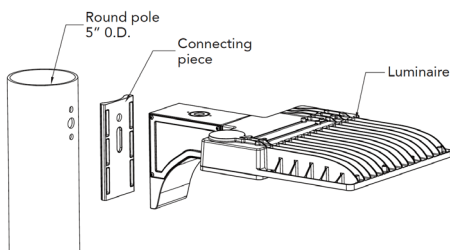
**LARGE**  
250W & 300W  
Slipfitter Mount



**LARGE**  
250W & 300W  
Pole Mount



## Mounting Dimensions



## Electrical Load

			Current (A)					
	Series Number	Wattage	120V	208V	240V	277V	347V	480V
ALCS	ALCS 60 T3 G1 5K	40W	0.33	0.19	0.16	0.14	0.12	0.08
	ALCS 96 T3 G1 5K	70W	0.58	0.34	0.30	0.25	0.20	0.15
	ALCS 140 T3 G1 5K	100W	0.83	0.48	0.41	0.36	0.29	0.21
ALCM	ALCM 210 T3 G1 5K	150W	1.25	0.72	0.63	0.54	0.43	0.31
	ALCM 260 T3 G1 5K	200W	1.66	0.96	0.83	0.72	0.58	0.42
ALCL	ALCL 350 T3 G1 5K	250W	2.08	1.20	1.04	0.90	0.72	0.52
	ALCL 410 T3 G1 5K	300W	2.50	1.44	1.25	1.08	0.87	0.62

## Projected Luminaire Maintenance

Ambient Temperature	OPERATING HOURS				Calculated L70 (Hours)
	0	25,000	50,000	100,000	
25°C / 77°F	1	0.95	0.91	0.81	>214,973

## Lumen Ambient Temperature (LAT) Multipliers

Ambient		Lumen Multiplier
0°C	32°F	1.02
10°C	50°F	1.01
20°C	68°F	1.00
25°C	77°F	1.00
30°C	86°F	0.98
40°C	104°F	0.98

# ALC G1



Series Number	Wattage	Lumen (Lm)	Distribution Type	B	U	G
ALCS 60 T3 G1 4K	40W	5,470	Type III	1	0	1
ALCS 60 T4 G1 4K		5,417	Type IV	1	0	1
ALCS 60 T5 G1 4K		5,600	Type V	3	0	1
ALCS 96 T3 G1 4K	70W	9,500	Type III	2	0	2
ALCS 96 T4 G1 4K		9,310	Type IV	2	0	2
ALCS 96 T5 G1 4K		9,730	Type V	3	0	1
ALCS 140 T3 G1 4K	100W	13,500	Type III	2	0	2
ALCS 140 T4 G1 4K		13,200	Type IV	2	0	2
ALCS 140 T5 G1 4K		13,800	Type V	3	0	2
ALCM 210 T3 G1 4K	150W	20,500	Type III	3	0	3
ALCM 210 T4 G1 4K		19,800	Type IV	3	0	3
ALCM 210 T5 G1 4K		20,500	Type V	4	0	2
ALCM 260 T3 G1 4K	200W	25,150	Type III	3	0	3
ALCM 260 T4 G1 4K		24,633	Type IV	3	0	3
ALCM 260 T5 G1 4K		25,500	Type V	4	0	2
ALCL 350 T3 G1 4K	250W	34,000	Type III	4	0	4
ALCL 350 T4 G1 4K		33,250	Type IV	4	0	4
ALCL 350 T5 G1 4K		34,750	Type V	5	0	3
ALCL 410 T3 G1 4K	300W	40,033	Type III	4	0	4
ALCL 410 T4 G1 4K		39,600	Type IV	4	0	4
ALCL 410 T5 G1 4K		40,500	Type V	5	0	3



# ALC G1



Series Number	Wattage	Lumen (Lm)	Distribution Type	B	U	G
ALCS 60 T3 G1 5K	40W	5,500	Type III	1	0	1
ALCS 60 T4 G1 5K		5,400	Type IV	1	0	1
ALCS 60 T5 G1 5K		5,720	Type V	3	0	1
ALCS 96 T3 G1 5K	70W	9,600	Type III	2	0	2
ALCS 96 T4 G1 5K		9,450	Type IV	2	0	2
ALCS 96 T5 G1 5K		9,800	Type V	3	0	1
ALCS 140 T3 G1 5K	100W	13,800	Type III	2	0	2
ALCS 140 T4 G1 5K		13,300	Type IV	2	0	2
ALCS 140 T5 G1 5K		13,900	Type V	3	0	2
ALCM 210 T3 G1 5K	150W	20,800	Type III	3	0	3
ALCM 210 T4 G1 5K		20,000	Type IV	3	0	3
ALCM 210 T5 G1 5K		20,800	Type V	4	0	2
ALCM 260 T3 G1 5K	200W	25,765	Type III	3	0	3
ALCM 260 T4 G1 5K		24,800	Type IV	3	0	3
ALCM 260 T5 G1 5K		26,000	Type V	4	0	2
ALCL 350 T3 G1 5K	250W	34,500	Type III	4	0	4
ALCL 350 T4 G1 5K		33,750	Type IV	4	0	4
ALCL 350 T5 G1 5K		35,250	Type V	5	0	3
ALCL 410 T3 G1 5K	300W	41,000	Type III	4	0	4
ALCL 410 T4 G1 5K		40,031	Type IV	4	0	4
ALCL 410 T5 G1 5K		41,000	Type V	5	0	3